

Welcome to DENNIS

We're excited to be your uniform partner!

About DENNIS

For over 100 years, we've built our reputation as the true uniform experts — designing, manufacturing and delivering best-in-class uniforms and uniform programs for families and schools across the nation.

Our Guarantee is Simple

DENNIS items are guaranteed to last through a full year's worth of normal wear and tear and are also guaranteed against manufacturer defects for the lifetime of the garment.

Expect Quality

We are constantly inspecting and refining our products to ensure they offer the comfort and durability that today's active student needs. Parents can expect consistent quality and craftsmanship in our school uniforms.

Get Started Online

CREATE AN ACCOUNT

Faster checkout, order history, tracking and so much more!

- Click **Log In** on the top of the page from anywhere on dennisuniform.com
- Click **Create Account** and enter your name, email and a unique password
- Click **Edit Account Info** – store your shipping address and school(s)

We Make It Easy - In-store purchases are synced with your online account using your email address – view all your purchases anytime!

YOUR SCHOOL CODE

Knowing your DENNIS Uniform school code is a great way to simplify your shopping. When your school webstore is live, head to dennisuniform.com and type in the full name of your school in the search bar. You'll see your school's code in the search result and at the top of your school's uniform webstore!

It is our privilege to serve your uniform needs.

DENNIS makes school uniforms easy.™



Easy Ways To Shop With DENNIS



Online at dennisuniform.com

- Smart school search and simple navigation
- Shop 24/7 at your convenience
- Complete size charts
- Fast, easy and secure checkout
- Live chat with our customer care center
- Extensive FAQ

Easy ordering and site organized very well. Found everything I needed and easy checkout process.

—MATTHEW F.



Total Support From Our Customer Care Center

- Virtual fitting assistance
- Help placing orders
- Account questions

Available for live chat on dennisuniform.com or by phone 7:30 a.m. – 3:30 p.m. Pacific. Or, email customerservice@dennisuniform.com anytime! Extended service hours and additional staff on hand during the back-to-school shopping season.

I've been a DENNIS customer for about six years. Great quality clothing. Good customer service!

—SHERRY E.



In Store: 40+ Retail Locations Nationwide

Visit dennisuniform.com/pages/find-a-store for locations and hours.

- Clean, organized retail space
- Local school uniforms
- Friendly, knowledgeable staff
- Multiple dressing rooms
- Personal fitting assistance

Additional store hours and staff during the back-to-school shopping season.

This store is always very well-organized and the staff is friendly and helpful.

—SARAH F.

Fue muy rápida la atención y muy amable.

—XOCHITL S.



Customer Care Center

Live Chat: dennisuniform.com

Email: customerservice@dennisuniform.com

Call: 800.854.6951

We Make
School Uniforms Easy™

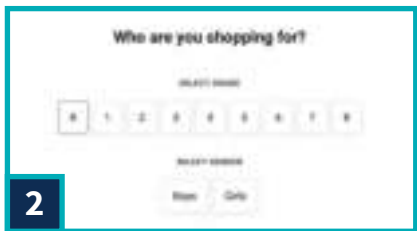
Welcome to Shopping Online

Learn more at dennisuniform.com/pages/shopping-updates.



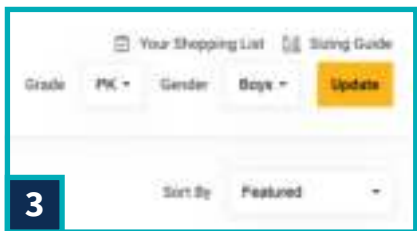
1

Start by searching for your school!
Type in your school name. If you don't see it right away, add the state for a more specific search. It's also helpful to remember your school code, which is located next to the name.



2

Next, select the grade and gender of your student.



3

Here, you'll see the uniform program for your student.
If you're not sure what items to start with, see your shopping list at the top of the page.



4

You can also sort items or filter by the product type on the left side of the page.



Logo items



Sale items



Special required items



New items



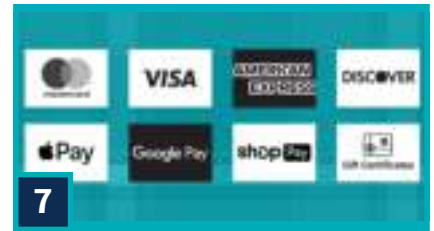
5

Click on any product to view details.
Select the color and size you need – size charts and support are available to help you get the perfect fit! When you're ready, click **Add to Bag**. You can return to the webstore to continue shopping.



6

Ready to check out? Great!
Review your bag and click **Continue to Checkout**.



7

Add your shipping and billing info.
Check out using one of our many convenient options. You'll receive a confirmation email and an email when your order has shipped.

DENNIS gladly accepts:

- All major credit cards
- Gift certificates
- Apple Pay
- Google Pay
- Shop Pay
- Shop Pay Installment plans

Shop Pay Installments are our flexible payment option.



8

Make uniform shopping even easier – create an account!
View your order history, find tracking info and more.



Customer Care Center

Live Chat: dennisuniform.com
Email: customerservice@dennisuniform.com
Call: 800.854.6951

*We Make
School Uniforms Easy™*

Answers at Your Fingertips

Explore our website: visit dennisuniform.com



Our Guarantee

DENNIS items are guaranteed to withstand one calendar year of normal wear and tear from the date of purchase and are also guaranteed against manufacturer defects for the lifetime of the garment.



Shipping Times

Most orders of in-stock items ship within two weeks of purchase from our centralized distribution center in Fort Worth, Texas. You'll receive emails to note your order confirmation, shipping and tracking information when available.



Return Process

Items that are still in their uniform program in their original condition (unwashed, unworn, with original tags) are accepted within 90 days of purchase.

- **IN-STORE RETURNS**

Easily return items at our 40+ retail stores with your packing slip or receipt (locate this under **My Account** online if needed).

- **HASSLE-FREE ONLINE RETURNS**

Use our simple return app to initiate your return – either print your return label for a \$7 fee and drop off at any UPS location or send directly back to our distribution center with the carrier of your choice. Get started at returns.dennisuniform.com!

Want to make an exchange? Just return the original item and then purchase your desired item.



FAQs

Find more answers to your questions in our extensive FAQ at help.dennisuniform.com!



Customer Care Center

Live Chat: dennisuniform.com

Email: customerservice@dennisuniform.com

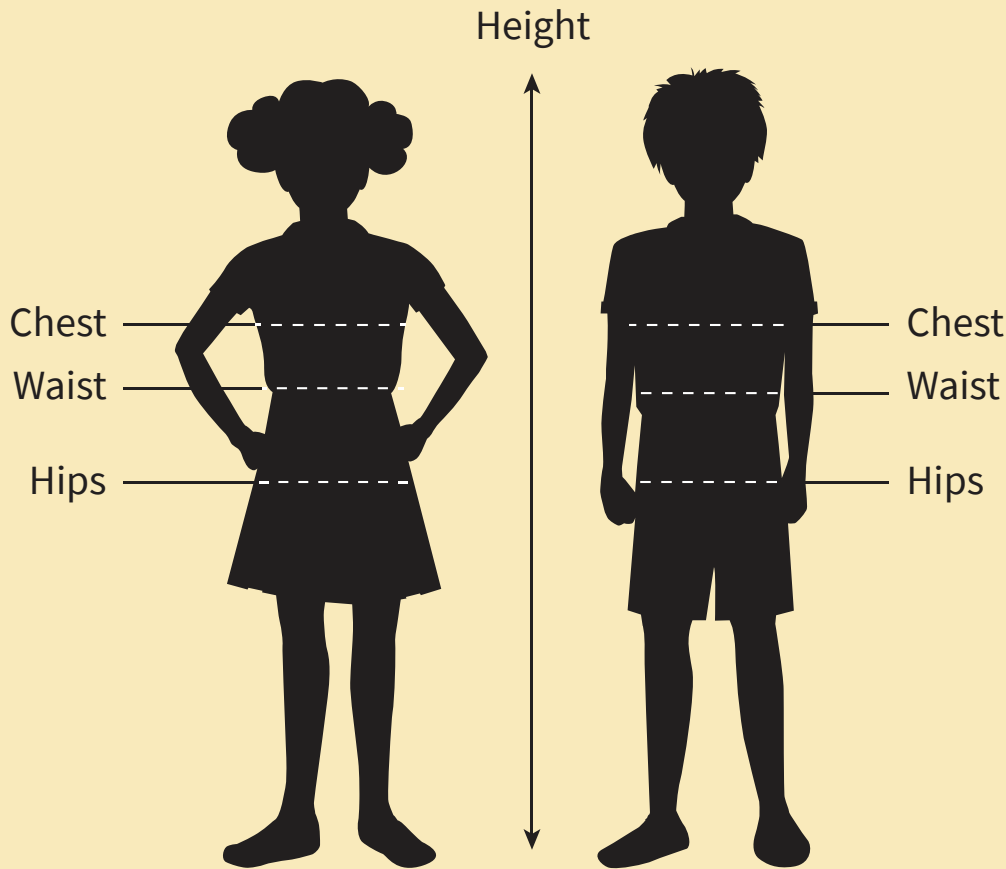
Call: 800.854.6951

*We Make
School Uniforms Easy™*

Get the Perfect Fit the First Time

Tips and Tricks for Sizing and Fit

How to Accurately Measure Your Child



YOU WILL NEED:



Record the measurements as you go.

Use a flexible measuring tape to:

- Measure height – stand tall (without shoes) and measure from top of head to floor.
- Measure chest at fullest part.
- Measure waist at narrowest part.
- Measure weight.

Tips and Tricks:

- Students should be barefoot and wearing undergarments only.
- Measuring tape should be snug but not tight.
- Update your student's measurements regularly as they grow!



Watch our helpful How-To videos at dennisuniform.com/pages/sizing-fit for a full video guide to measuring your student!



Customer Care Center

Live Chat: dennisuniform.com

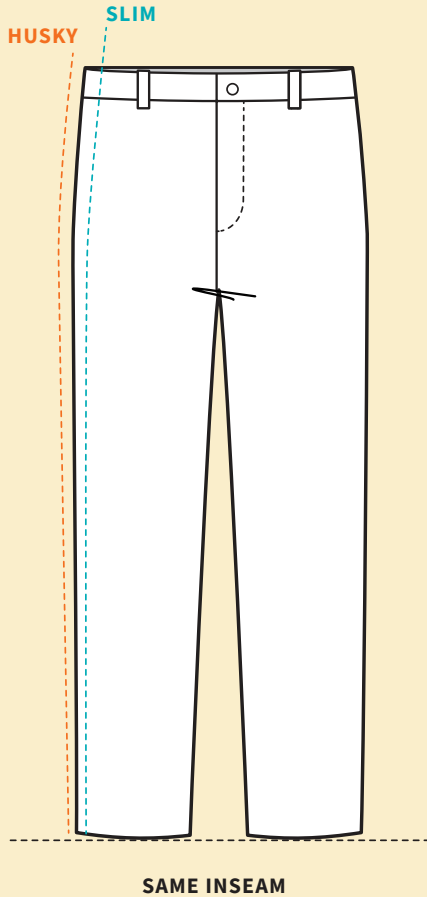
Email: customerservice@dennisuniform.com

Call: 800.854.6951

*We Make
School Uniforms Easy™*

Get a Perfect Fit the First Time

Tips and Tricks for Sizing and Fit Continued



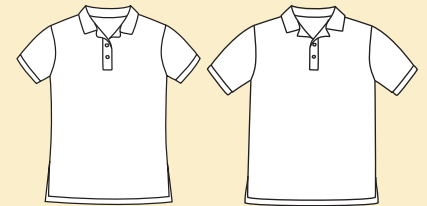
Slim, Regular, Husky – Which one do I need?

Slim: While not restrictive, slim fit is narrower and has a more tailored fit in the thigh and waist area in the pants. If your student is on the slender side, slim fit may be the perfect option for a tidy look.

Husky: Husky pants offer a more spacious fit for wider frames or growing kids who need a little extra space. These pants have a standard inseam measurement with added room in the waist, thigh and leg.

If your child doesn't fall into either of these categories, the **Regular** fit should work perfectly. For most DENNIS uniform items, it's typically better to size up for a longer-lasting and more comfortable fit!

See individual size charts at dennisuniform.com/pages/sizing-fit for more details.



Feminine Fit

Unisex Fit

Feminine Fit vs. Unisex Polos What's the difference?

Our Feminine Fit Polos provide subtle waist shaping for those looking for a more tailored look, while Unisex Polos offer an easy, more neutral silhouette.

Junior Sizing Explained

Junior sizing is for students 5'0" - 5'5" tall and is designated by uneven (odd numbered) sizes. Junior sizes are typically slimmer-cut in the hips and bust areas than standard women's sizing but are taller than girls' sizing. Please see the chart below for adult alpha size equivalents.

Find more charts and information on our [Sizing & Fit Hub](#)

dennisuniform.com/pages/sizing-fit

JUNIORS / ADULTS (Adult alpha size to Junior numerical size equivalency shown)														
Alpha Size	AXS			AS		AM		AL		AXL		A2XL		A3XL
Size	J0	J1	J3	J5	J7	J9	J11	J13	J15	J17	J19	J21	J23	J25
Height (inches)	51 - 52	51 - 52	52 - 53	53½ - 54½	54½ - 55½	55½	55½	55½	55½	55½	55½	55½	55½	55½
Chest (inches)	29½ - 30½	30½ - 31	31 - 31½	32½ - 33	33 - 34½	34½ - 35½	35½ - 36½	37½ - 38	38½ - 39½	40 - 41	41 - 42½	43 - 45½	46 - 48½	49½ - 51½
Waist (inches)	22 - 23	24 - 25	25½ - 26	26½ - 27	28 - 28½	28 - 29½	30 - 30½	31 - 31½	32 - 33	34 - 34½	35 - 35½	36½ - 38	39 - 41	42½ - 45½



Customer Care Center

Live Chat: dennisuniform.com
 Email: customerservice@dennisuniform.com
 Call: 800.854.6951

*We Make
School Uniforms Easy™*

Kids' Shoe Measuring Guide

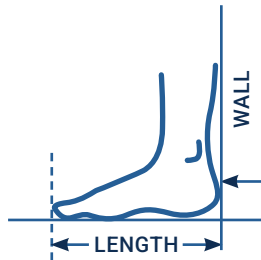
For the right fit, print at "100% scale" (uncheck "page scaling").

IF A CREDIT CARD FITS IN THIS BOX BETWEEN THE OUTLINES, YOUR PRINT SCALE IS CORRECT.

	length	width	date
left			
right			

LENGTH

1. Cut out width ruler and set aside. Tape size guide to a hard floor with the curved line touching a wall.
2. Place one foot on the length ruler, aligning heel with curved line.
3. Mark the first visible line past longest toe with pencil.
4. Record measurement and repeat for other foot.



WIDTH

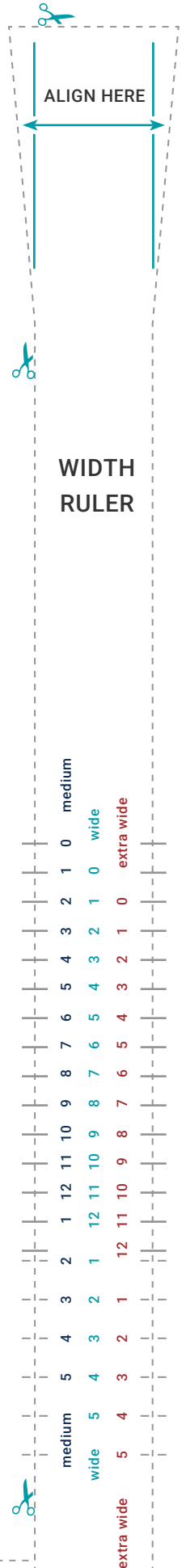
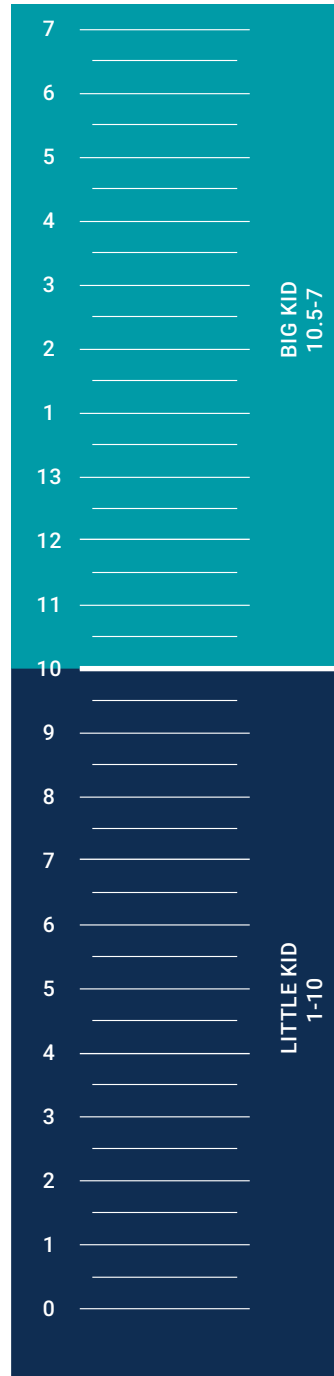
1. With child standing, wrap the width ruler around the widest part of the foot.
2. Mark the line that meets the arrows with a pencil. Make sure you mark the side closest to the ankle.
3. Determine where your child's length measurement falls within that line. For instance, if your child's length is 7:
 - » If arrows align with the 7 (dark blue or top line), the width is medium.
 - » If arrows align with the 7 (teal or middle line), the width is wide.
 - » If arrows align with the 7 (red or bottom line), the width is extra wide.
4. Record each foot's width.



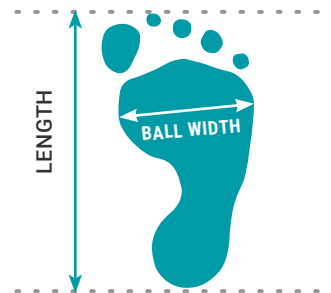
Note: If your child's feet are two different sizes, choose the larger one. If your child is between widths, use the wider one.

DID YOU KNOW?

A child's foot can grow up to half a size every three months, so be sure to remeasure your student every two months.



LENGTH RULER



Recommended Shopping List

HOW MANY ITEMS DO I NEED?

Shopping for uniforms? Use this handy guide!
For each item, we generally recommend having one for today, one in the laundry and one for tomorrow.

KEEP IN MIND

How many items you need will be affected by:

- Your school's requirements
- Your local climate and weather
- How often your family does laundry
- How often your student has recess, gym class or sports practice
- How quickly your student is growing

ITEM	GRADES	GRADES	GRADES	GRADES	HAVE	NEED	SIZE	ITEM#, COLOR
	PRE-K, K	1-5	6-8	9-12				
tops	4-6	4-6	3-5	2-5				
pants / shorts	4-6	4-6	3-5	2-3				
skirts / skorts	3-5	3-5	2-3	1-3				
jumpers / dresses	2-3	2-3	2-3	1-3				
sweaters / vests	2-4	2-4	2-3	1-3				
blazers / jackets / fleeces / sweatshirts	2-3	2-3	1-2	1-2				
socks	6-9	6-9	6-9	6-9				
tights	3-6	3-6	3-5	3-5				
bike shorts / leggings	3-5	3-5	2-3	1-3				
ties / accessories	2-3	2-3	1-2	1-2				
gym wear	2-3	2-3	2-3	2-3				

Check your school's uniform requirements at dennisuniform.com



Customer Care Center

Live Chat: dennisuniform.com
Email: customerservice@dennisuniform.com
Call: 800.854.6951

*We Make
School Uniforms Easy™*